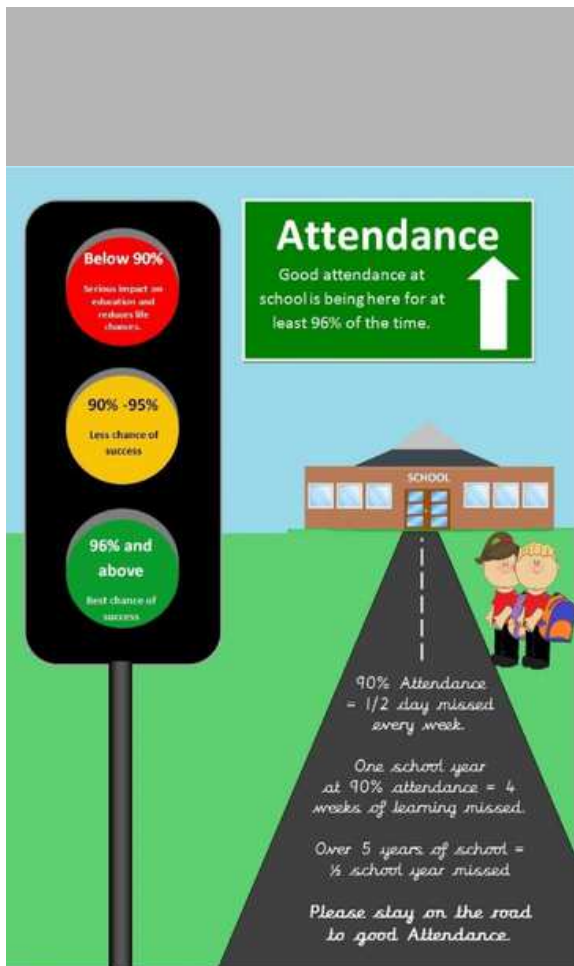


Headteacher's Newsletter 2025-26 Issue 10 01/12/25



Attendance Matters

Please continue to support us in maintaining excellent attendance for all children. Term time holidays will not be authorised in any circumstances. Fines will be issued in response to holidays taken and the penalties increase for repeated holidays.

Calendar Dates

Please continue to check the calendar on our website for important dates:
<https://www.willowgrove.school/parents/term-dates/>

Communication with Class Teachers and SLT

Please continue to send any communication to the school office in the first instance (admin@willowgrove.school). This will help us to ensure that teachers receive emails within their working hours. We will always strive to reply as soon as possible but please understand that this may at busy times, take a few working days. If your email is urgent, please give us a call or speak to the teacher at pick up.

Exciting News!

We will be expanding our capacity for next year's EYFS to 60 places (two classes)! Parents of children due to start school in September 2026 have until mid-January to apply - please do share your positive thoughts about the school with friends and family who may be considering us.

Be Creative - Be Authentic - Be Your Best

Don't forget our raffle:
<https://www.facebook.com/share/p/17SiLcDBmp/>

Contact 01234 581150 admin@willowgrove.school www.willowgrove.school

Be Creative - Be Authentic - Be Your Best

